



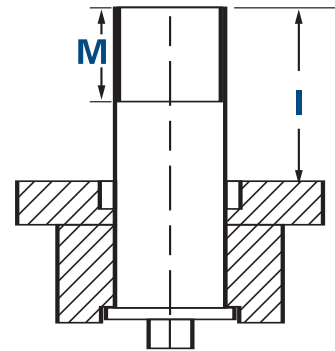
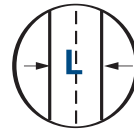
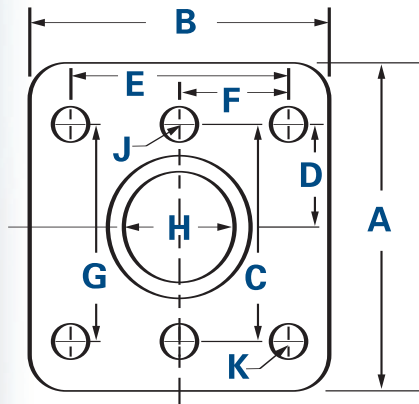
C 8000

Cast Iron Flanged End Ball Valve



Listed below are the average breakaway torques required to operate the model C8000 valve at 200psi wog in a liquid environment such as water and other lubricating fluids. This value is normally the highest required torque to operate our Model C8000. Torques can increase substantially in dry or non-lubricating applications. Please consult the factory should you have questions regarding any application.

SIZE (inches)	TORQUE (ft. lbs.)
2	35
2 1/2	48
3	62
4	130
6	260
8	360
10	535



MOUNTING PAD DIMENSIONS

Size (in.)	A	B	C	D	E	F	G	H	I	J	K	L	M
2	3.620	2.745	2.310	.985	1.970	.985	1.970	.825	2.100	2pl M 12	4pl M8	.470	1.495
2 1/2	4.725	3.740	2.935	1.415	2.835	1.40	2.835	1.100	2.400	2pl 1/2 unc	4pl 7/16 unc	.665	1.810
3	4.725	3.740	2.935	1.415	2.835	1.40	2.835	1.100	2.400	2pl 1/2 unc	4pl 7/16 unc	.665	1.810
4	4.725	3.740	2.935	1.415	2.835	1.40	2.835	1.100	2.400	2pl 1/2 unc	4pl 7/16 unc	.665	1.810
6	5.160	4.725	3.465	1.730	3.465	1.730	3.465	1.775	2.750	6pl 1/2 unc	6pl 1/2 unc	1.060	2.205
8	5.160	4.725	3.465	1.730	3.465	1.730	3.465	1.775	2.750	6pl 1/2 unc	6pl 1/2 unc	1.060	2.205
10	5.160	4.725	3.465	1.730	3.465	1.730	3.465	1.775	2.750	6pl 1/2 unc	6pl 1/2 unc	1.060	2.205

Dimensions and weights are given as approximates; consult factory for details.

TORQUE SEALS